

# NPA Knowledge Organiser: Year 4 Computing - Spring

## Data and Information – Data logging



Why do you think we need to collect data?



Fitness tracker	
Day	Steps
Sunday	10307
Monday	12139
Tuesday	9844
Wednesday	12015
Thursday	7053
Friday	11413
Saturday	4341

During this unit, we are going to look at how we collect data. We must have a reason for collecting data and know what we are going to do with it. We must know what we are recording, how we are recording it and how we will show the results and conclusions

### Weather

Day	Summary	Temperature (°C)	Rainfall (mm)
Sunday	Sunny	21	0
Monday	Partly cloudy	17	0
Tuesday	Overcast	16	2
Wednesday	Overcast	15	1
Thursday	Partly cloudy	16	0
Friday	Sunny	20	0
Saturday	Sunny	22	0

### Automatic data collection

Data loggers can be left to record data on their own. The data can be downloaded later.

You're going to place a data logger somewhere in the room and leave it to automatically collect data.

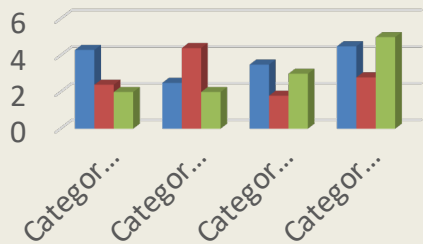
Choose somewhere where you think the light level, temperature level, or sound level might vary the most.

We are going to use automatic data loggers that can be left to track data such as light, temperature and sound.

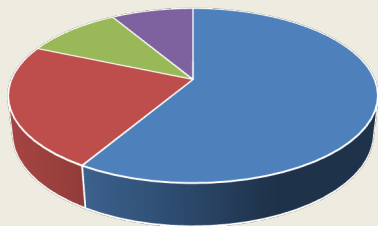
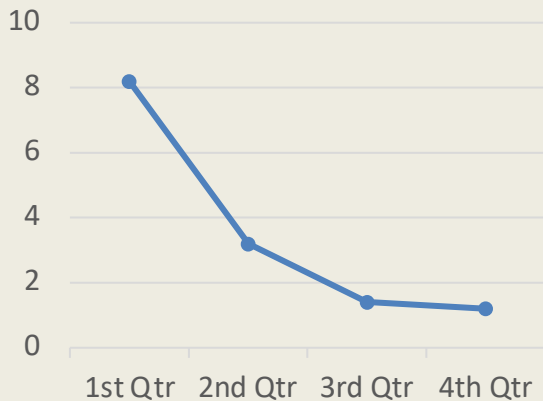
We are going to compare the reliability of these with human collection of logging data and see which we think is the best.



# NPA Knowledge Organiser: Year 4 Computing - Spring



■ Series 1 ■ Series 2 ■ Series 3



■ 1st Qtr ■ 2nd Qtr ■ 3rd Qtr ■ 4th Qtr

Once we have collected data, we can decide which way to present it. We can choose different graphs or charts that best showcase the information we have collected. We will be using Microsoft Excel to create our graphs.



## KEY WORDS

<b>DATA</b>	facts and statistics collected together
<b>SENSOR</b>	a device which <u>detects</u> or measures a property and records it.
<b>LOGGING</b>	make a recording of events or observations
<b>ANALYSIS</b>	discover or reveal (something) through close examination
<b>INPUT DEVICE</b>	what is put in, taken in, or operated on by any process or system
<b>REVIEW</b>	view or <u>inspect</u> again.
<b>CONCLUSION</b>	a judgement or decision reached by reasoning

